

IQPODZ07

## True Wireless Earbuds Manual

Bluetooth® v5.0

[iqbudz.ca](http://iqbudz.ca)

### SAFETY CAUTION

If you choose to use the iQ budz while driving, please observe and abide by all applicable driving laws.

Please keep all the equipment and accessories away from small children or animals as the small pieces may cause choking if swallowed.

Please refrain from using the product in extreme temperature environments (Below - 20 degrees centigrade or above 45 degrees centigrade)

Extreme temperatures can reduce the charging capacity of the device, and shorten the battery life.

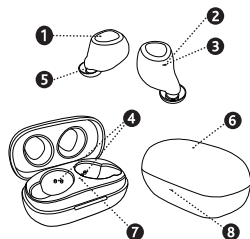
Do not use abrasive cleaning solvents to clean the budz.

Do not allow the budz near sharp objects as this will cause scratching and damages.

Exposure to heavy rainfall or other moisture can severely damage the product. Submersion of the product in liquid will likely cause irreversible damage to the budz.

Please use caution when listening to media at high volume for long periods of time as it can cause damage to your hearing over time.

### APPEARANCE



- 1 - Main Button
- 2 - Charging Indicator
- 3 - Microphone
- 4 - Charging Pins
- 5 - Ear Tips
- 6 - Charging Case
- 7 - Case Charging Indicator
- 8 - Type - C Charging Port

### WEARING THE BUDZ

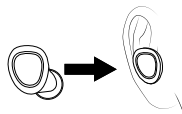
Remove the budz from the charging case and identify the

Right **R** and Left **L** sides by looking for the icons on the budz. This indicates which ear you wear the budz in.



**L** Left budz      **R** Right budz

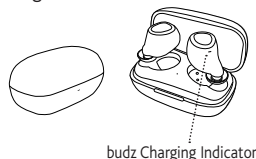
Place the **R** budz in your right ear and the **L** budz in your left ear.



Gently adjust the budz until they are firmly in place.

### CHARGING THE BUDZ

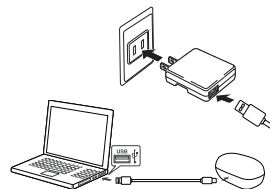
Place both budz into the Charging Case. The budz Charging Indicators will light up white when being charged and will turn off automatically after it is fully charged.



budz Charging Indicator

### CHARGING THE CASE

Use the included USB Type-C charging cable and connect the case to a power supply.

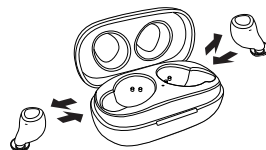


### Important Notes:

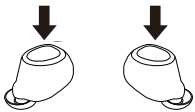
- Please use the supplied Type-C cable to charge this device. Using a third party cable may cause damage to the device.
- Do not attempt to force open the built-in battery as this could damage the device.
- A fully charged device will lose its power automatically if left unused. It is recommended to charge the device after periods of unuse.

### BLUETOOTH PAIRING

1. Take the budz out of the charging case. They will Power On and enter auto pairing mode. The budz indicator will slowly flash white, signifying that the budz are ready to be paired with a Bluetooth device.

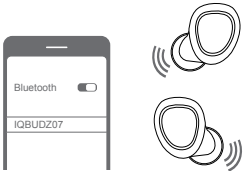


**Note:** If the budz are in an OFF state, press and hold the Main Button on the **R** and **L** budz for 2 seconds to Power On. The budz will automatically enter pairing mode.



2. Go to the Bluetooth connection list on your smart phone or tablet and search for **"IQBUDZ07"** Bluetooth name. Click to connect. Once connected, a voice prompt will say, **"Connected"** indicating that the budz are connected to the Bluetooth device.

**Note:** Once the budz have been paired with a Bluetooth device they will automatically connect to that same device when they are Powered on in the future.



**MAIN BUTTON FUNCTIONS**

**Power ON:** Press and hold Main Button on the **R** and **L** budz for 2 seconds to Power On.

**Power OFF:** Press and hold Main Button on the **R** and **L** budz for 5 seconds to Power Off.

**Auto Power ON/OFF:** Remove from case to power ON and putback in case to power OFF. Case must be charged for Auto ON/OFF.

**Music Play/Pause:** Press the Main Button on the **R** or **L** budz to play or pause music or videos.

**Music Next/Previous:** Double press the Main Button on the **R** budz to go to the next song. Double press the Main Button on the **L** budz to go to the previous song.

**Volume +/-:** Triple press the Main Button on the **R** budz to increase the volume. Triple Press the Main Button on the **L** budz to decrease the volume.

**Answer Call:** Press the Main Button on the **R** or **L** budz to answer an incoming call.

**End Call:** Press and hold the Main Button on the **R** or **L** budz for 2-3 seconds to end a call.

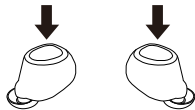
**Refuse Call:** Press and hold the Main Button on the **R** or **L** budz for 2 seconds to refuse a call.

**Google Assistant/Siri:** When in standby mode or music playing long press the Main Button

on the **R** or **L** budz. This will activate Google Assistant/Siri on your phone/tablet.

**Note:** This feature only supports devices with Google Assistant or Siri functions.

**Deleting Pairing Records/Reset:** In OFF mode press and hold the Main Button on the **R** and **L** budz for 8 seconds until the indicator flashes white 3 times.



**SPECIFICATIONS**

Bluetooth	V5.0
Operation Range	Up to 10 meters
Frequency Range	2.4GHz-2.48GHz
Battery of budz	45Mah Li-polymer Battery
Charging Voltage of budz	DC 5±0.2V
Charging Time of budz	1.5 hours
Battery of Case	300Mah Li-polymer Battery
Charging Voltage of Case	DC 5±0.2V
Charging Time of Case	2 hours
Music Playing Time	Up to 3.5 hours
Calling Talk Time	Up to 3.5 hours
Standby Time	Up to 70 hours

**TROUBLE SHOOTING**

**budz are not turning on or turning off automatically**  
Charge the budz for 1-2 hours. Your battery may be low.

**budz aren't turning on when I remove them from the case**  
Charge the case and the budz for 1-2 hours. Your battery may be low.

**There is no sound after I paired my budz**  
Try re-pairing your Bluetooth device to the budz. Your budz may not have paired correctly.

**The **R** or **L** budz are not auto pairing when Powered On**  
If the budz fail to auto pair with each other, Delete pairing records on your device. You may have too many pairing records stored.

**Charging base indicator is not turning on when charging**  
Check that the Type-C Cable is firmly plugged in.

**CUSTOMER SERVICE**

For more information or service contact Customer Service Department.  
**Email:** [iqbudz@gentec-intl.com](mailto:iqbudz@gentec-intl.com) or  
**Phone:** 905-513-7733

Visit [iqbudz.ca](http://iqbudz.ca) for easy pairing videos and more information.